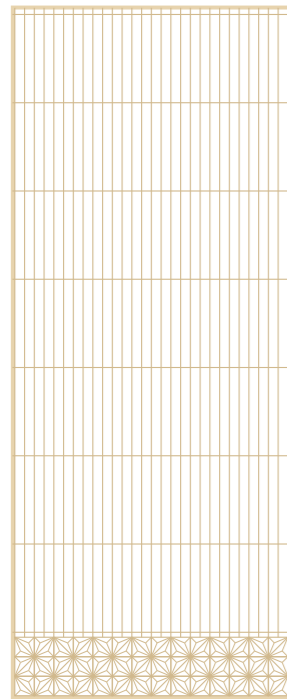
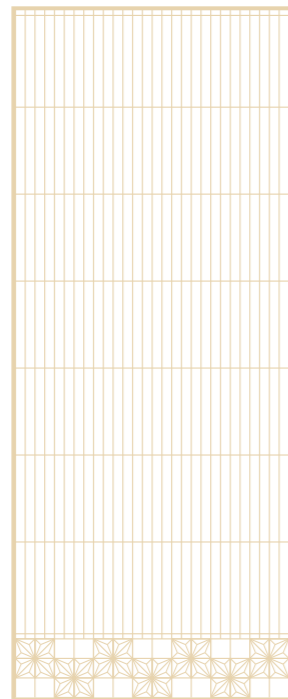


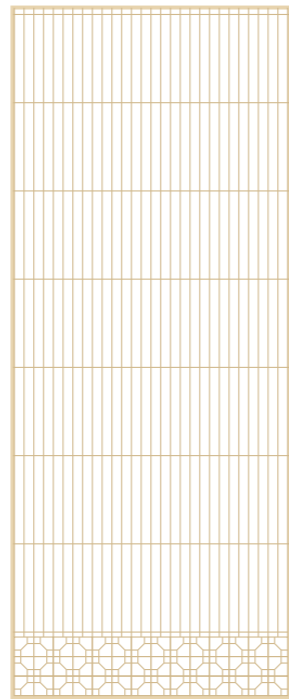
引き戸としてご使用の場合は、別途「本枠」を建具店などにご依頼ください。  
ここに掲載した10種のデザインの他に、「吉祥組子」「麻の葉ちらし」シリーズのデザインで製作することも可能です。  
If you want to use it as a sliding door, request a separate "main frame" from a joinery vendor.  
It is also possible to use designs from the Auspicious Kumiko and Asanoha Chirashi series.



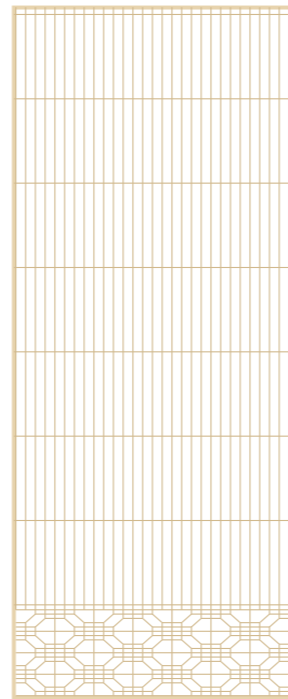
腰角麻入(ベタ) TKS-101  
Koshi-kakuasa-beta



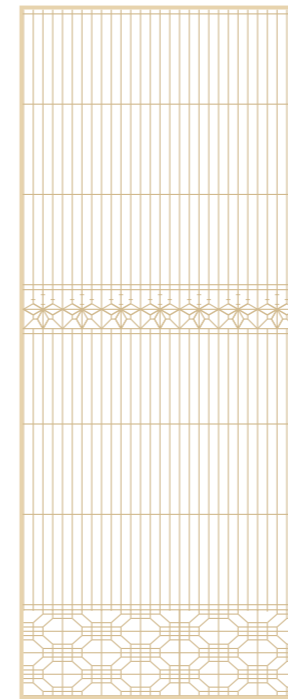
腰角麻入(散らし) TKS-102  
Koshi-kakuasa-chirashi



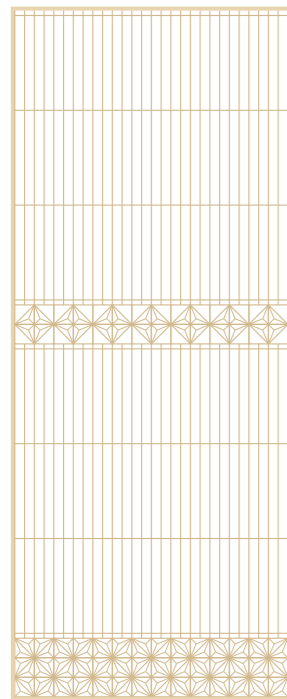
腰蜀江入 TKS-103  
Koshi-shokko



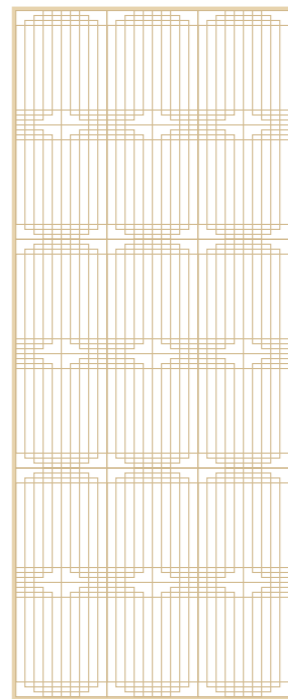
腰二重蜀江入 TKS-104  
Koshi-nijuu-shokko



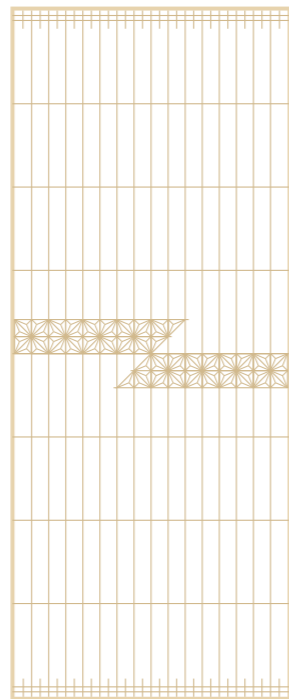
桐麻に二重蜀江入 TKS-105  
Kiriasa-nijuu-shokko



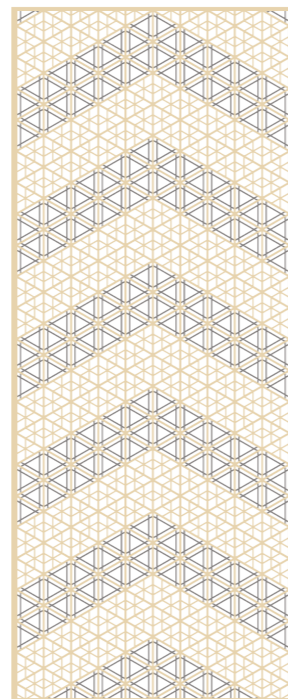
二段角麻入 TKS-106  
Nidan-kakuasa



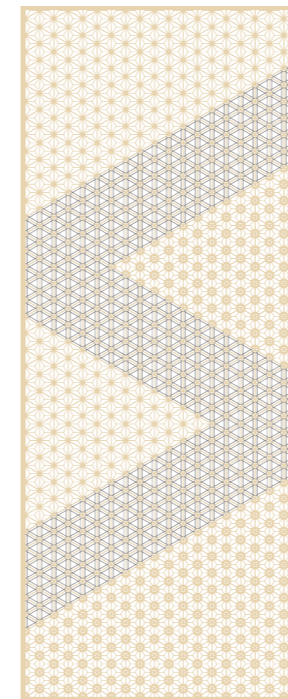
二重香囀入 TKS-107  
Nijuu-kouzu



帯角麻入(腰なし) TKS-108  
Obi-kakuasa



帯分組子[矢羽根] TKS-109  
Obi-wake-yabane  
※文様部分の色分け：ヒノキ、神代杉



帯分組子[つづら折り] TKS-110  
Obi-wake-tsuzura  
※文様部分の色分け：ヒノキ、神代杉

価格 Price 1枚・無塗装 Unpainted (Price per door, Tax excluded)

税別表示 単位：円 Tax excluded/Currency:Yen

仕様：幅 Width 700~1000 mm / 厚み Thickness 12 mm / 枠材 Frame 12×12 mm

● 国産杉(源平材) / 国産ヒノキ(源平材) Japanese cedar/Japanese Cypress  
◎ 吉野杉(赤身材) / 木曽ヒノキ(源平材) / 利休杉 Yshino cedar/Kiso Cypress/Rikyu cedar

製品名 / 品番 Product name / no.	木材 material	H(高) 1850~2100 mm	H(高) 2101~2300 mm
腰角麻入(ベタ) Koshi-kakuasa-beta	● ◎	113,000 150,000	142,000 178,000
腰角麻入(散らし) Koshi-kakuasa-chirashi	● ◎	132,000 169,000	163,000 199,000
腰蜀江入 Koshi-shokko	● ◎	116,000 153,000	147,000 181,000
腰二重蜀江入 Koshi-nijuu-shokko	● ◎	135,000 172,000	165,000 200,000
桐麻に二重蜀江入 Kiriasa-nijuu-shokko	● ◎	200,000 235,000	228,000 263,000
二段角麻入 Nidan-kakuasa	● ◎	138,000 175,000	168,000 202,000
二重香囀入 Nijuu-kouzu	● ◎	261,000 327,000	288,000 355,000
帯角麻入(腰なし) Obi-kakuasa	● ◎	138,000 179,000	173,000 207,000
帯分け[矢羽根](大柄) Obiwake-yabane (Large pattern)		340,000	374,000
	国産ヒノキと神代杉	use Japanese Cypress and Jindai Cedar	
帯分け[つづら折り] Obiwake-tsuzura		420,000	460,000
	国産ヒノキと神代杉	use Japanese Cypress and Jindai Cedar	

